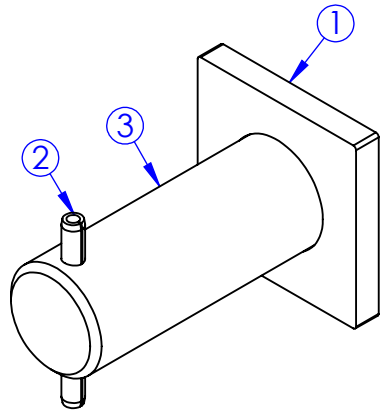
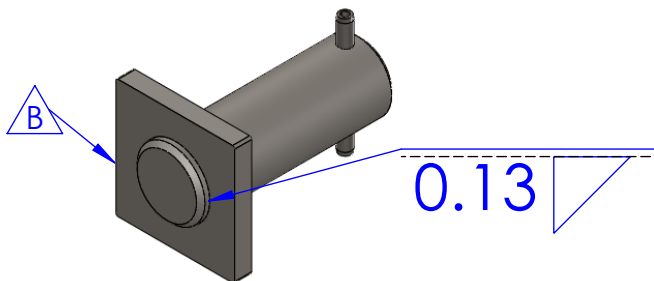
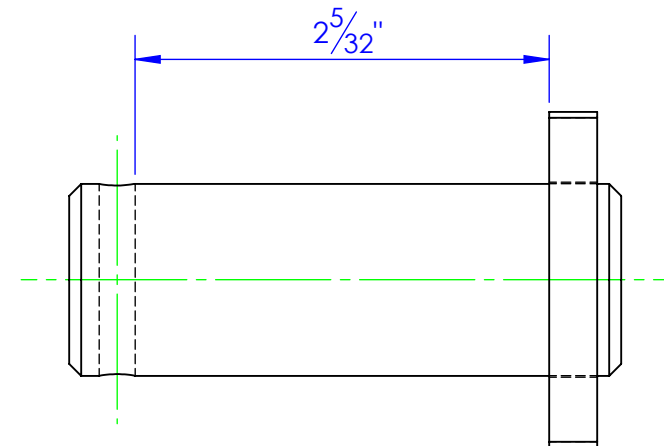
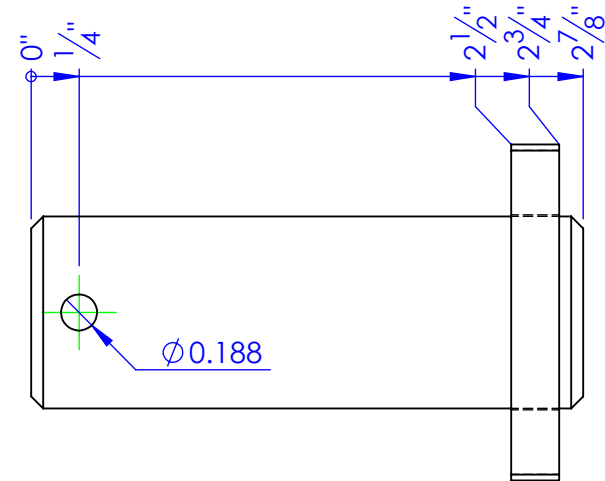
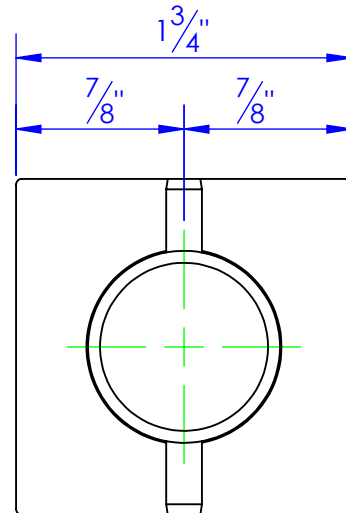


ITEM NO.	PART NUMBER	DESCRIPTION	MATERIAL	DRAWING #	QTY.
1	FP-LINKAGE PIN TAB	LINKAGE PIN TAB	1/4" HRS	10-1703	1
2	HD-PE-3/16x1-3/4	EXPANPIN 3/16x1-3/4	PE-3/16 x 1-3/4		1
3	STC-CR 1x4142 L 2.875	LENGTH: 2-7/8"	CF ANN 4142 1 RDx 12	10-1708	1

REV.	REVISIONS DESCRIPTION	DATE	APPROVED
B	UPDATED TO MATCH 3D MODEL	2/9/2013	



MAIN LINKAGE PIN 1" BAR



PROPRIETARY AND CONFIDENTIAL
THE INFORMATION CONTAINED IN THIS DRAWING IS THE SOLE PROPERTY OF TRIPLE C INC. ANY REPRODUCTION IN PART OR AS A WHOLE WITHOUT THE WRITTEN PERMISSION OF TRIPLE C INC. IS PROHIBITED.

DIMENSIONS ARE IN INCHES
TOLERANCES:
FRACTIONAL $\pm 1/16$
ANGULAR: MACH ± 1 BEND \pm
TWO PLACE DECIMAL ± 0.010
THREE PLACE DECIMAL ± 0.005

MATERIAL ---
DO NOT SCALE DRAWING

NAME	DATE
DRAWN HEATH	2/5/2013
PART #	
ASM #	RE-PN-1X250

MAIN LINKAGE
REAR PIN, HB
1" BAR

P.O. BOX 248,
SABETHA, KS 66534

TRIPLE C
INC.

SIZE A	DWG. NO. 10-1708 B	REV. B
SCALE: 1:1	WEIGHT: 0.79 LBS.	SHEET 1 OF 1